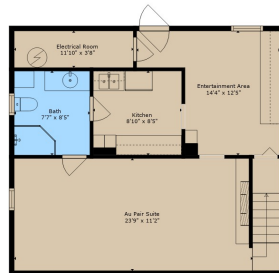


Main Level



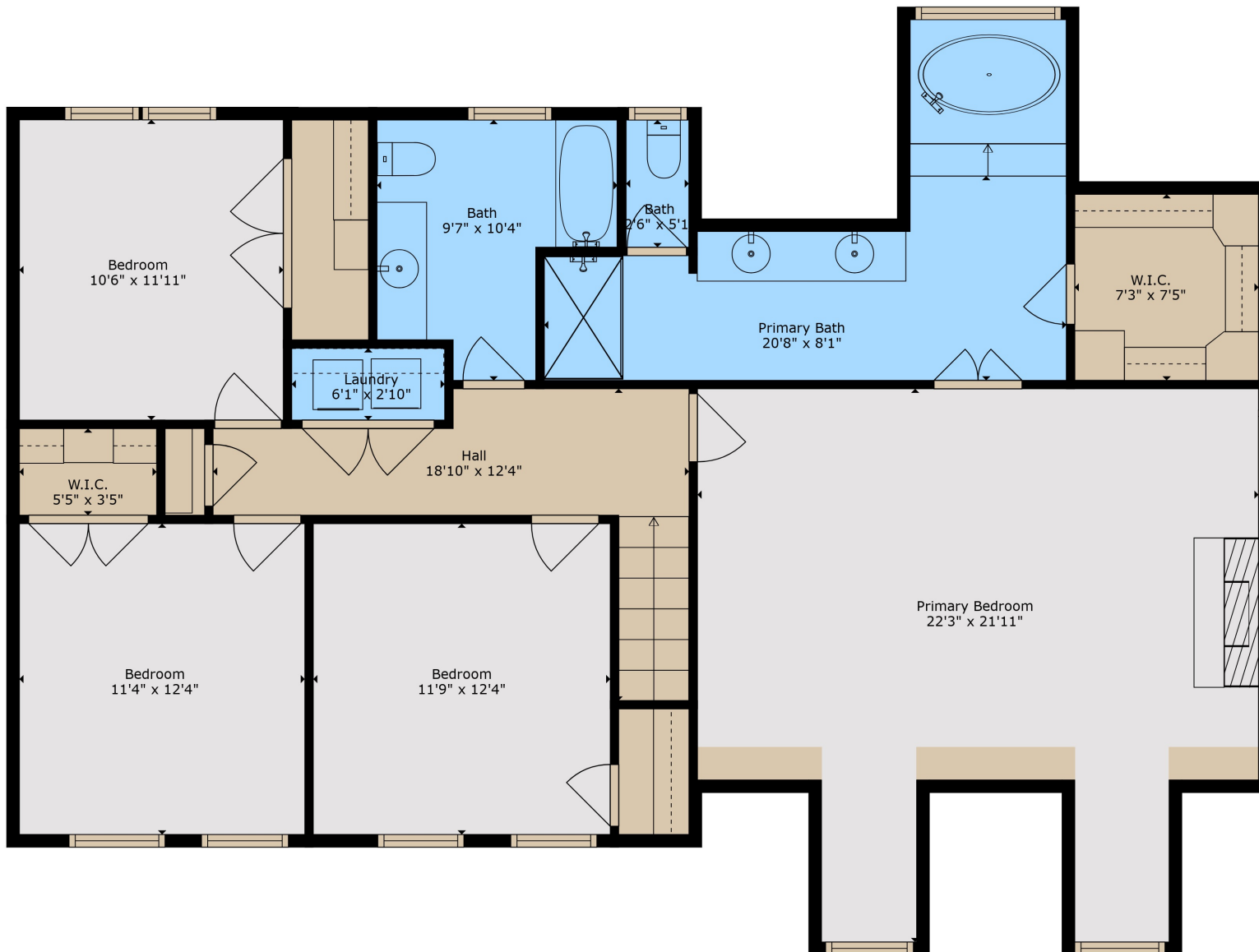
Basement

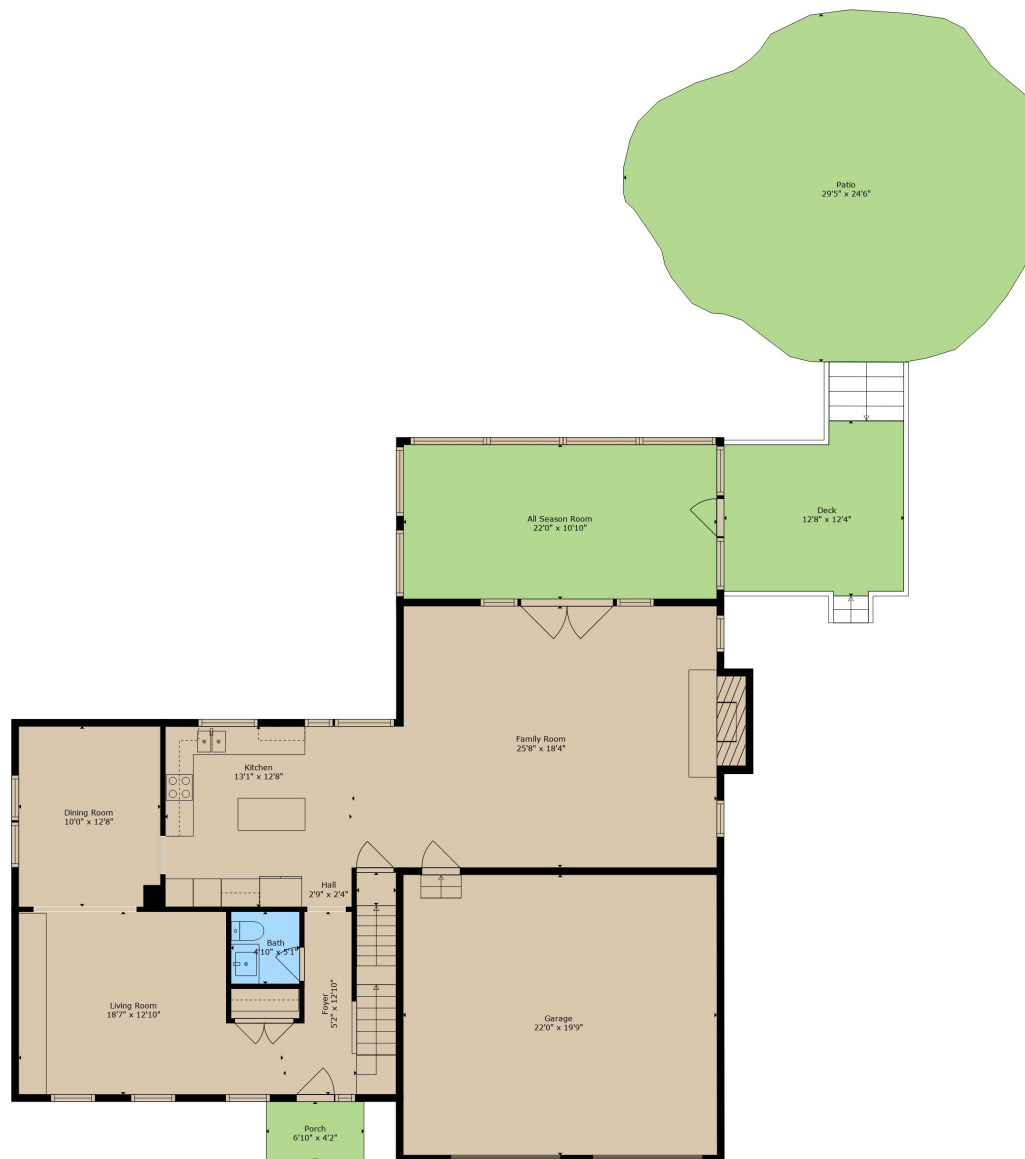


Upper Level

TOTAL: 3029 sq. ft
 BELOW GROUND: 591 sq. ft, MAIN LEVEL: 1101 sq. ft, UPPER LEVEL: 1337 sq. ft
 EXCLUDED AREAS: ELECTRICAL ROOM: 43 sq. ft, GARAGE: 435 sq. ft, ALL SEASON ROOM: 239 sq. ft,
 DECK: 140 sq. ft, PATIO: 557 sq. ft, PORCH: 29 sq. ft,
 FIREPLACE: 15 sq. ft, LOW CEILING: 19 sq. ft

While These Measurements Are Highly Reliable, They Are Not Guaranteed.





TOTAL: 3029 sq. ft
 BELOW GROUND: 591 sq. ft, MAIN LEVEL: 1101 sq. ft, UPPER LEVEL: 1337 sq. ft
 EXCLUDED AREAS: ELECTRICAL ROOM: 43 sq. ft, GARAGE: 435 sq. ft, ALL SEASON ROOM: 239 sq. ft,
 DECK: 140 sq. ft, PATIO: 557 sq. ft, PORCH: 29 sq. ft,
 FIREPLACE: 15 sq. ft, LOW CEILING: 19 sq. ft

While These Measurements Are Highly Reliable, They Are Not Guaranteed.

